

# AMAR INDUSTRIES





# COMPANY PROFILE

---

## About Us

**Amar Industries** is managed by entrepreneurs and professionals rich in experience for Designing, developing & Manufacturing Dip Molding PVC Products & Power Cable Accessories.

## Quality Policy

We at **Amar Industries** shall strive hard to produce quality products by complying with requirements of QMS 9001:2015 with an endeavor of continuous improvement in Man, Machine, Material & Method to achieve total customer satisfaction.

## Our Mission

To become leaders in PVC Dip Molding & Cable Connectors for industrial and domestic applications and to delight our customers by providing long lasting and cost-effective services.

## Our Vision

To create an image of the organization as an ethical business house, with high technical competency & having a concern for society.



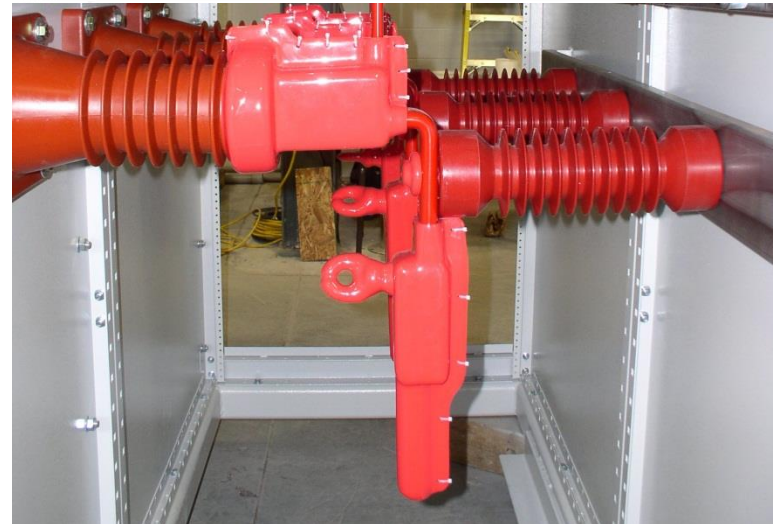
# CLIENTELE LIST

---

- L&T Ltd.
- L&T - Saudi Arabia
- Tamco - Malaysia.
- Schneider Infrastructure Ltd - India.
- Toshiba Transmission & Distribution Systems Asia Sdn. Bhd.
- ABB India.
- Siemens India.
- C&S Electric Ltd. – India.
- Voltamp Transformers.
- Sterling Generators.
- Stelmec Ltd. – India.
- Sudhir Power.
- Dowells Cable Accessories Pvt Ltd.

# BUS-BAR INSULATING SHROUDS

- Insulating the bus-bar & Switchgear joints is very unmanageable and exceptional job owing to very complex and varied profile of the joints in the layouts that are of much customized nature. Because of this majority of the joints are left open without insulations.
- Therefore, many advanced countries & some Indian MNCs have made it mandatory to use flexible shrouds made of PVC Plastics for insulation of joints
- **Features**
  1. Suitable for insulating bus-bar joints. (tee, elbow, etc.).
  2. Provides significant reduction in air clearances.
  3. Excellent thermal & electrical properties.
  4. Good for indoor & outdoor applications.

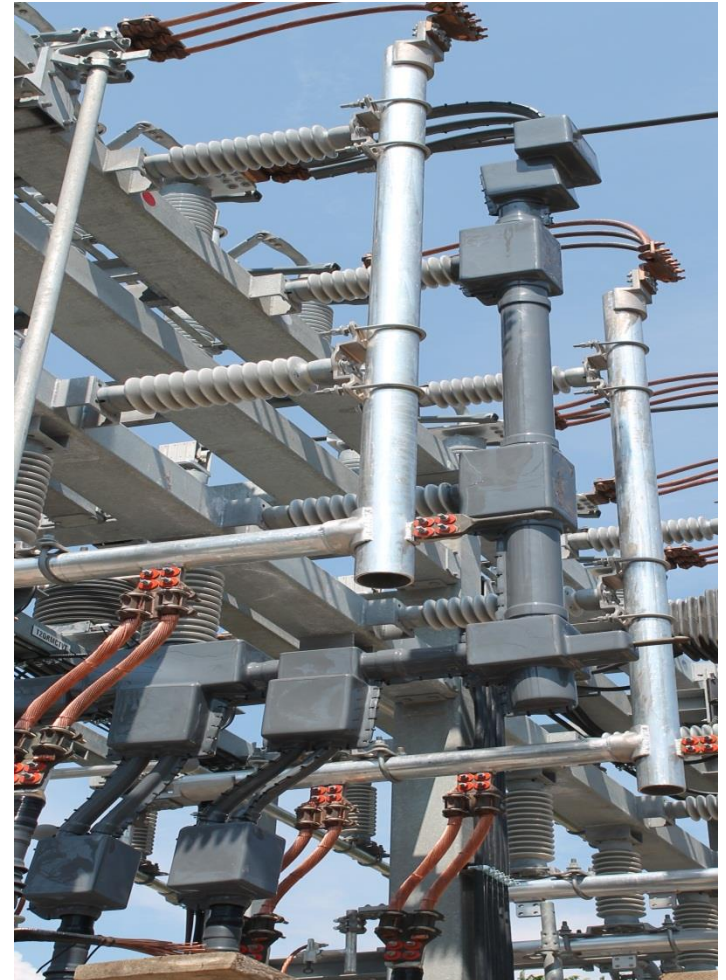


# SUBSTATION PROTECTION SHROUDS

- Outdoor protectors are re-enterrable closure, they have been designed to insulate connection of fuse bushings.
- The UV resistance, anti-tracking material protects energized conductors from flashover caused by wildlife.
- There are wide range of bushing sizes and are suitable for substation & distribution applications.

## Features:

1. Flame retardant properties.
2. High Insulation factors
3. Protects Unscheduled outages caused by wildlife.
4. Extreme temperature resistance,



# OVERHEAD LINE INSULATION SLEEVE

- Overhead Line Insulation Sleeve is made of silicone rubber and widely applied in transformer station protections or railway catenary system and performs effectively in cross line. These covers are designed to insulate existing bare lines without costly conductor replacement expenditure or additional line hardware.

## Features

- Prevent short circuit resulted from birds, insects or foreign objects lapping and protect power distribution outer insulation.
- Effectively prevent power failure from short circuit caused by foreign object lapping.
- Significantly delay outdoor metal rusty



# FLEXIBLE BUSHING BOOT

- The Flexible insulating boot is cold applied boot to provide increased insulation between phase to phase and phase to ground for medium voltage switchgear and transformer cable boxes where the air clearances are not sufficient for normal operation and to prevent electrical flashover due to high humidity or rodents.
- **Features**
  1. Kits designed to cover a wide range of cable sizes. 35 sq.mm – 400 sq.mm
  2. Flexible Structure covers right-angled or straight installation in a single design
  3. Suits bushing diameter Range from 46mm – 70mm. Special Collar applied suit for smaller bushing diameter 31mm – 45mm.



# CABLE TERMINAL BOOT FOR (RMU)

- Pre-molded elbow boots are applied for switchgear and transformer connections with the function of protecting, insulating and sealing. They are also used to reduce the clearances between phase to phase and phase to ground. Such boots have outstanding behaviors from the weathering resistance and electrical properties.
- **Features**
  1. High performance insulation material
  2. Outstanding track resistance
  3. Environmental and erosion resistance
  4. Connection can be energized immediately after installation





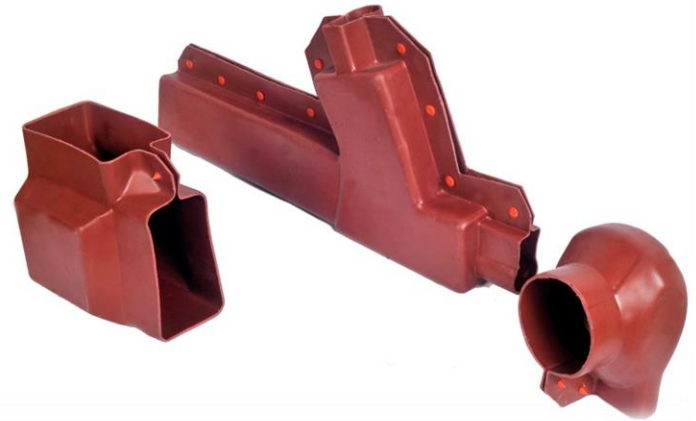
# HT VERTICAL CABLE TERMINAL BOOT

- Pre-molded elbow boots are applied for switchgear and transformer connections with the function of protecting, insulating and sealing. They are also used to reduce the clearances between phase to phase and phase to ground. Such boots have outstanding behaviors from the weathering resistance and electrical properties.
- **Features**
  1. High performance insulation material
  2. Outstanding track resistance
  3. Environmental and erosion resistance
  4. Connection can be energized immediately after installation



# EPDM / SILICONE RUBBER SHROUDS

- Silicon/EPDM Shrouds are a long-term solution to the incidence of outages caused by bird and animal wildlife. It is used to insulate the bus-bar connection of panels. It is made of high-quality Rubber to provide good electrical insulation properties. They are easy to install and have a good environment adaptability.
- It is Suitable for connections of HV & LV inlet and outlet lines of the transformers. Avoids direct body connection and flashovers.



# END CAPS

- PVC Dip Molded end caps are strong & permanent environmental seal.
- Excellent resistance to weathering, moisture contamination & adverse environmental conditions.

## ■ Features

1. Push-on type application
2. Ensures perfect protection to cable ends from weathering, moisture & contamination.
3. Quick & easy installation without any tools. No skill is required.
4. Extremely economical & cost effective compared to Heat Shrink End Caps.



# CABLE GLAND HOOD

- Cable gland hood made by PVC dip molding process are very flexible, durable, soft & of high insulating properties. We manufacture all types of BW & CW gland hoods.
- Customized designs for cable gland hood can be made.
- FRLS type of shrouds are also available.

